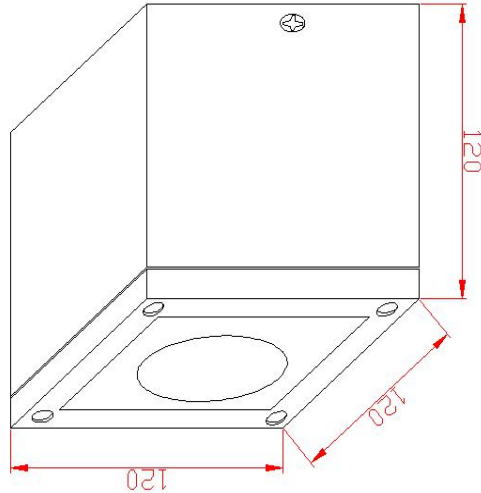


## DOWN CEILING LIGHT DATASHEET

### 1. PICTURE AND DIMENSION:



### 2. DESCRIPTION AND SPECIFICATION:

- . ITEM NO: 9730.10.65.30
- . ITEM NAME : DOWN CEILING LIGHT
- . MATERIAL: ALUMINUM BODY + TEMPERED GLASS
- . LAMP: 10W CREE COB
- . CCT:3000K
- . 80LUM/W
- . DRIVER: MW DRIVER
- . DIMENSION: 120\*120\*120MM
- . INPUT VOLTAGE: AC220V 50/60HZ
- . FINISH: OUTDOOR SATIN DARK GREY
- . IP65
- . WITH 25CM RUBBER 3\*0.75MM<sup>2</sup>CABLE
- . 304 SS SCREW OUTSIDE
- . 5 YEAR WARRANTY

Very thanks you to choose our products. Before install this product, pls carefully read this installation instruction, and keep it for the future reference

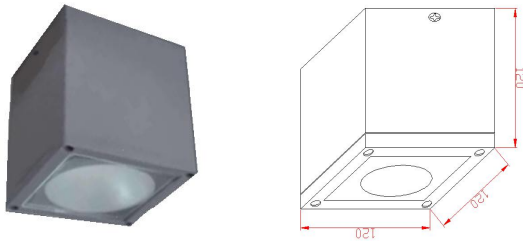
**Outdoor Down Ceiling Light  
Manual of user**

**Summary**

- .Base function: Outdoor Down Ceiling light
- .Using place : Down Ceiling
- .Techinal parameter:

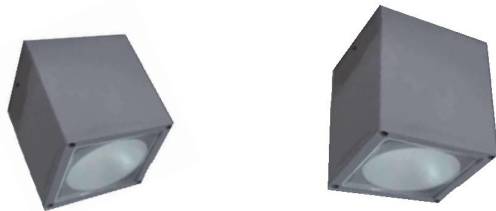
| Model no      | Voltage    | Frequency | Product Size  | Power | LUM   | CCT   | IP |
|---------------|------------|-----------|---------------|-------|-------|-------|----|
| 9730.10.65.30 | AC220-240V | 50/60HZ   | 120*120*120MM | 10W   | 800lm | 3000K | 65 |

**Product Image and dimension**



**Warning** using and installation in according with use of manual

- .The input volatge should no exceed the rate voltage range(Rate voltage: AC220-AC240V 50/60HZ)
- .The Down ceiling light can not be installed in the following palce:



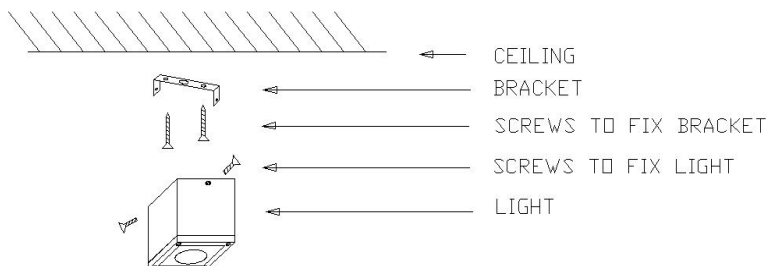
**Included place**

**Unfixed Ceiling Board**

- .It is not possible to install the down ceiling light above high temperature object.
- .The Down ceiling light is not dimmed and cant not be used with dimmer
- .Inspection and repair , pls entrust a professional to operate.
- .When the Down ceiling light fails, pls cut off power quickly and link with manufacture.

**Installation**

- .Take out the product from the inner box.
- .Disassemble the bracket from the light and fix the bracket on the ceiling by 2pcs screws from accessories
- .Link the power line in the connector, if connection is wrong, it is easy to casue fire, so firstconnect the GND before connect power
- . Install the light on the bracket by 2pcs screws





### ■ Features :

- Constant current mode design
- Universal AC input / Full range
- Protections: Short circuit / Over voltage
- Fully isolated plastic case
- Small and compact size
- Cooling by free air convection
- Class II power unit, no FG
- Class 2 power unit
- Pass LPS
- IP42 design
- Suitable for LED related fixture or appliance (such as LED Decoration or Advertisement devices)(Note.6)
- 100% full load burn-in test
- Low cost / High reliability
- 2 years warranty

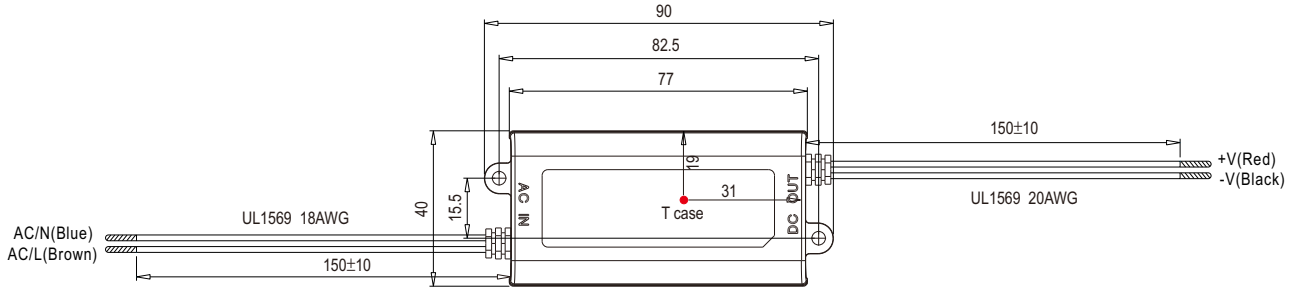
### SPECIFICATION

LPS IP42 IS 15885(Part.2/Sec13) (optional)  
R-41027766

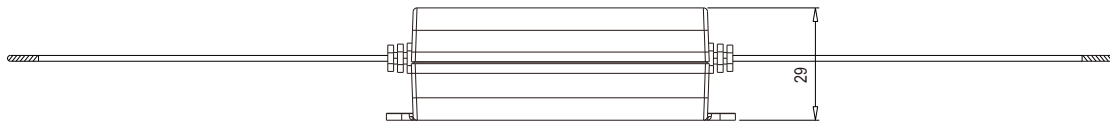
| MODEL                 |   | APC-16-350   | APC-16-700                          |
|-----------------------|---|--|-------------------------------------|
| OUTPUT                | RATED CURRENT   | 350mA  | 700mA                               |
|                       | DC VOLTAGE RANGE  | 12~48V   | 9~24V                               |
|                       | RATED POWER   | 16.8W  | 16.8W                               |
|                       | RIPPLE & NOISE (max.) Note.2  | 300mVp-p   | 250mVp-p                            |
|                       | VOLTAGE TOLERANCE Note.3  | ±5.0%  |                                     |
|                       | CURRENT ACCURACY  | ±8.0%  |                                     |
|                       | LINE REGULATION   | ±1.0%  |                                     |
|                       | LOAD REGULATION   | ±3.0%  |                                     |
|                       | SETUP, RISE TIME  | 3000ms, 200ms / 230VAC   | 3000ms, 200ms / 115VAC at full load |
| HOLD UP TIME (Typ.)   | 20ms/230VAC   | 12ms/115VAC at full load   |                                     |
| INPUT                 | VOLTAGE RANGE Note.4  | 90 ~ 264VAC  | 127 ~ 370VDC                        |
|                       | FREQUENCY RANGE   | 47 ~ 63Hz  |                                     |
|                       | EFFICIENCY(Typ.)  | 84%  | 83%                                 |
|                       | AC CURRENT  | 0.3A/230VAC;0.5A/115VAC  |                                     |
|                       | INRUSH CURRENT(Typ.)  | COLD START 45A(twidth=210µs measured at 50% Ipeak) at 230VAC   |                                     |
|                       | MAX. No. of PSUs on 16A CIRCUIT BREAKER   | 13 units (circuit breaker of type B) / 23 units (circuit breaker of type C) at 230VAC                                  |                                     |
| LEAKAGE CURRENT       | 0.25mA / 240VAC   |  |                                     |
| PROTECTION            | OVER VOLTAGE  | 50.4~ 60V  | 27.6~ 33.5V                         |
|                       |   | Protection type : Shut off o/p voltage, clamping by zener diode  |                                     |
| ENVIRONMENT           | WORKING TEMP.   | -30 ~ 70°C (Refer to "Derating Curve")   |                                     |
|                       | WORKING HUMIDITY  | 20 ~ 90% RH non-condensing   |                                     |
|                       | STORAGE TEMP., HUMIDITY   | -40 ~ +80°C, 10 ~ 95% RH   |                                     |
|                       | TEMP. COEFFICIENT   | ±0.2%/°C (0 ~ 50°C)  |                                     |
|                       | VIBRATION   | 10 ~ 500Hz, 2G 10min./1cycle, period for 60min. each along X, Y, Z axes  |                                     |
| SAFETY & EMC (Note 5) | SAFETY STANDARDS Note.7   | UL8750,CSA C22.2 No.250.0-08, BIS IS15885, EAC TP TC 004 approved; design refer to BS EN/EN 62368-1                    |                                     |
|                       | WITHSTAND VOLTAGE   | I/P-O/P:3.75KVAC   |                                     |
|                       | ISOLATION RESISTANCE  | I/P-O/P:>100M Ohms / 500VDC / 25°C / 70% RH  |                                     |
|                       | EMC EMISSION  | Compliance to BS EN/EN55032,BS EN/EN61000-3-2,BS EN/EN61000-3-3, EAC TP TC 020   |                                     |
|                       | EMC IMMUNITY  | Compliance to BS EN/EN55024,BS EN/EN61000-4-2,3,4,5,6,8,11; light industry level(surge 2KV), criteria A, EAC TP TC 020 |                                     |
| OTHERS                | MTBF  | 1145.7K hrs min. MIL-HDBK-217F (25°C)  |                                     |
|                       | DIMENSION   | 77*40*29(L*W*H)  |                                     |
|                       | PACKING   | 0.1Kg; 120pcs/14Kg/1.06CUFT  |                                     |
| NOTE                  | <p>1. All parameters NOT specially mentioned are measured at 230VAC input, rated load and 25°C of ambient temperature.</p> <p>2. Ripple &amp; noise are measured at 20MHz of bandwidth by using a 12" twisted pair-wire terminated with a 0.1uf &amp; 47uf parallel capacitor.</p> <p>3. Tolerance : includes set up tolerance, line regulation and load regulation.</p> <p>4. Derating may be needed under low input voltage. Please check the static characteristic for more details.</p> <p>5. The power supply is considered as a component that will be operated in combination with final equipment. Since EMC performance will be affected by the complete installation, the final equipment manufacturers must re-qualify EMC Directive on the complete installation again.</p> <p>6. This product is not intended for LED lighting luminaire applications in the EU.(In the EU the LPF/NPF/XLG series are recommended.)</p> <p>7. The model certified for CCC(GB19510.14, GB19510.1, GB17743 and GB17625.1) is an optional model . Please contact MEAN WELL for details.</p> <p>8. The ambient temperature derating of 3.5°C/1000m with fanless models and of 5°C/1000m with fan models for operating altitude higher than 2000m(6500ft).</p> <p>9. For any application note and IP water proof function installation caution, please refer our user manual before using.</p> <p><a href="https://www.meanwell.com/Upload/PDF/LED_EN.pdf">https://www.meanwell.com/Upload/PDF/LED_EN.pdf</a></p> <p>※ Product Liability Disclaimer : For detailed information, please refer to <a href="https://www.meanwell.com/serviceDisclaimer.aspx">https://www.meanwell.com/serviceDisclaimer.aspx</a></p> |  |                                     |

## Mechanical Specification

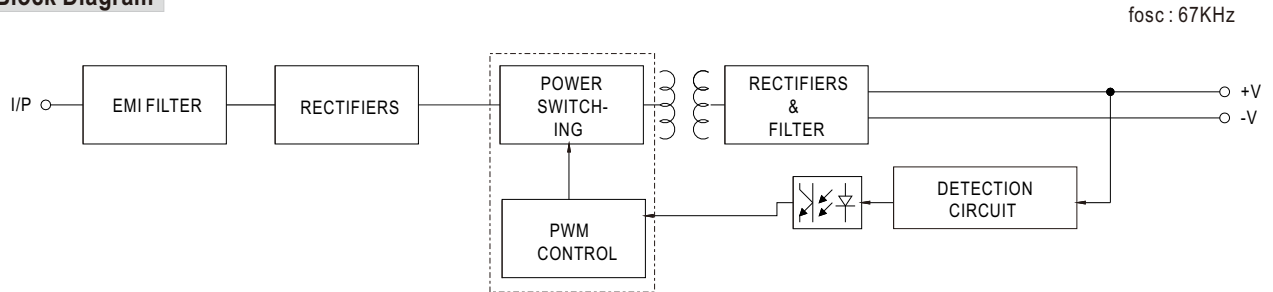
Unit:mm



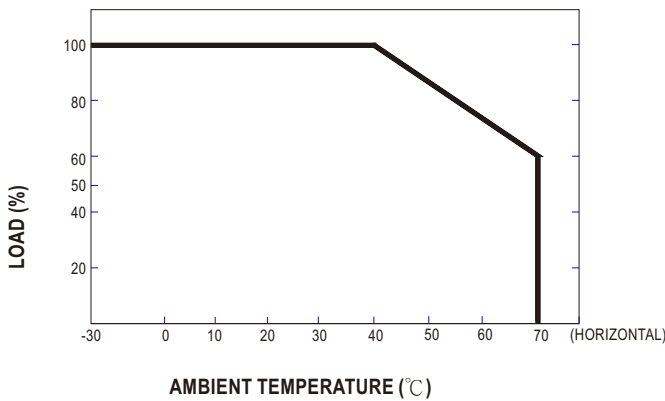
※ T case: Max. Case Temperature



## Block Diagram



## Derating Curve



## Static Characteristics

